

Protected by



Controlled Environments

Middle East
Africa
Turkey
Central Asia
India

Cold Store Doors

Sliding Doors

MOD 809TP - 809TL - 812TXL - 812TXXL



Sliding Doors

The sliding doors **MOD 808TP - 809TP - 809TL - 812TXL - 812TXXL**, as a key when the opening at the width is greater than 1,20m, when pallet trucks - fork lifts enter and when the doors open continuously or automatically.

MOD 808TP up to 0° C

MOD 809TP up to -2° C

MOD 809TL up to -25° C

MOD 812TXL up to -30° C

MOD 812TXXL up to -40° C

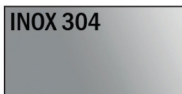
Standard

Plastified sheet



Optional

Stainless steel sheet



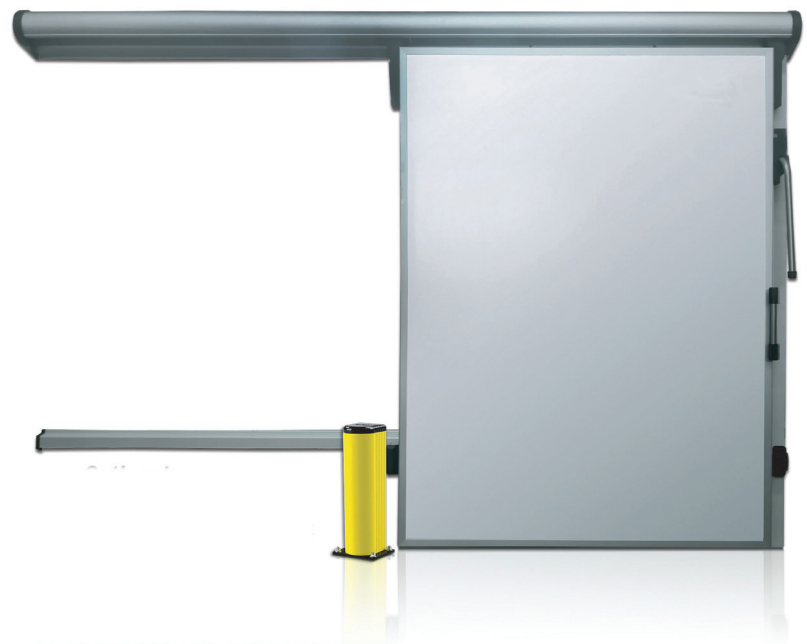
Large dimensions window



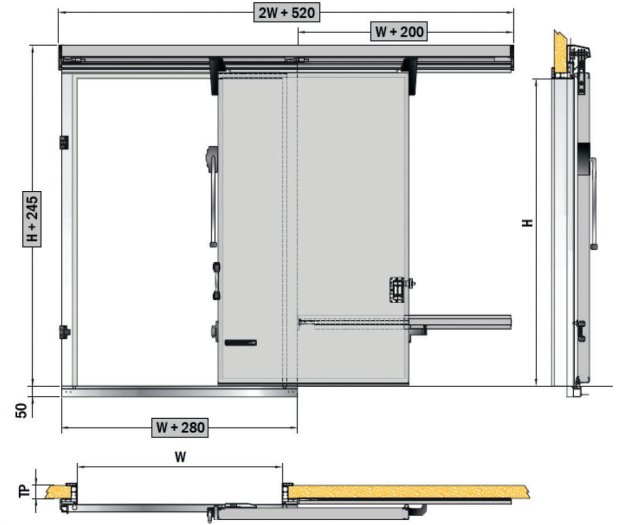
Key lock

MOD 808TP - 809TP - 809TL - 812TXL - 812TXXL

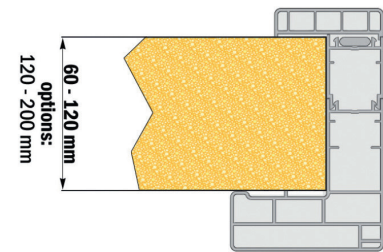
- A. Angle - shaped frame, made from heavy duty, robust and reinforced with marine plywood, PVC, with modern German design and high mechanical strength. In accordance with HACCP standards. EASY-PASS (quick & easy assembly).
- B. Standard door leaf with Polyurethane insulation supplied from Germany of density 42 kg/m³, with injection at heated press of 500 tonnes. Door surface made from German steel sheets 30% thicker than the competition, plasticized to a thickness of 200 µm with Sanisteel® film coating with antibacterial properties.
- C. Slide mechanism of modern design, exceptional sliding properties. Very soft closing and easy disengagement.
- D. Slide mechanism cover made from round, curved aluminium profile. It ensures perfect adhesion at the gaskets, without extra components on the floor.
- E. External shutter Inox 304 of modern design, extra heavy duty lever.
- F. Border gaskets, insulating properties with beehive cells, perfect adhesion, and with door heating element installed for the defrosting.
 - Five year written guarantee.
 - Wide colour range.



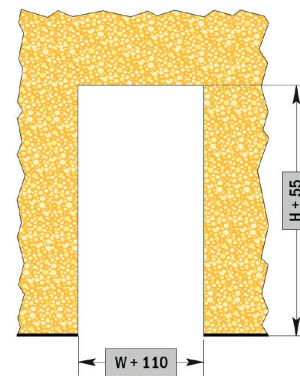
MOD 808TP	MOD 809TP	MOD 809TL	MOD 812TXL	812TXXL
W x H	W x H	W x H	W x H	W x H
800 x 2000	800 x 2000	800 x 2000	800 x 2000	800 x 2000
800 x 2200	800 x 2200	800 x 2200	800 x 2200	800 x 2200
900 x 2000	900 x 2000	900 x 2000	900 x 2000	900 x 2000
900 x 2200	900 x 2200	900 x 2200	900 x 2200	900 x 2200
1000 x 2000	1000 x 2000	1000 x 2000	1000 x 2000	1000 x 2000
1000 x 2200	1000 x 2200	1000 x 2200	1000 x 2200	1000 x 2200
1100 x 2000	1100 x 2000	1100 x 2000	1100 x 2000	1100 x 2000
1100 x 2200	1100 x 2200	1100 x 2200	1100 x 2200	1100 x 2200
1200 x 2000	1200 x 2000	1200 x 2000	1200 x 2000	1200 x 2000
1200 x 2200	1200 x 2200	1200 x 2200	1200 x 2200	1200 x 2200
1200 x 2400	1200 x 2400	1200 x 2400	1200 x 2400	1200 x 2400
1300 x 2000	1300 x 2000	1300 x 2000	1300 x 2000	1300 x 2000
1300 x 2200	1300 x 2200	1300 x 2200	1300 x 2200	1300 x 2200
1300 x 2400	1300 x 2400	1300 x 2400	1300 x 2400	1300 x 2400
1400 x 2000	1400 x 2000	1400 x 2000	1400 x 2000	1400 x 2000
1400 x 2200	1400 x 2200	1400 x 2200	1400 x 2200	1400 x 2200
1400 x 2400	1400 x 2400	1400 x 2400	1400 x 2400	1400 x 2400
1500 x 2000	1500 x 2000	1500 x 2000	1500 x 2000	1500 x 2000
1500 x 2200	1500 x 2200	1500 x 2200	1500 x 2200	1500 x 2200
1500 x 2400	1500 x 2400	1500 x 2400	1500 x 2400	1500 x 2400
1600 x 2000	1600 x 2000	1600 x 2000	1600 x 2000	1600 x 2000
1600 x 2200	1600 x 2200	1600 x 2200	1600 x 2200	1600 x 2200
1600 x 2400	1600 x 2400	1600 x 2400	1600 x 2400	1600 x 2400
1600 x 2600	1600 x 2600	1600 x 2600	1600 x 2600	1600 x 2600
1600 x 2800	1600 x 2800	1600 x 2800	1600 x 2800	1600 x 2800
1800 x 2200	1800 x 2200	1800 x 2200	1800 x 2200	1800 x 2200
1800 x 2400	1800 x 2400	1800 x 2400	1800 x 2400	1800 x 2400
1800 x 2600	1800 x 2600	1800 x 2600	1800 x 2600	1800 x 2600
1800 x 2800	1800 x 2800	1800 x 2800	1800 x 2800	1800 x 2800
2000 x 2200	2000 x 2200	2000 x 2200	2000 x 2200	2000 x 2200
2000 x 2400	2000 x 2400	2000 x 2400	2000 x 2400	2000 x 2400
2000 x 2600	2000 x 2600	2000 x 2600	2000 x 2600	2000 x 2600
2000 x 2800	2000 x 2800	2000 x 2800	2000 x 2800	2000 x 2800
2000 x 3000	2000 x 3000	2000 x 3000	2000 x 3000	2000 x 3000
2000 x 3200	2000 x 3200	2000 x 3200	2000 x 3200	2000 x 3200
2200 x 2400	2200 x 2400	2200 x 2400	2200 x 2400	2200 x 2400
2200 x 2600	2200 x 2600	2200 x 2600	2200 x 2600	2200 x 2600
2200 x 2800	2200 x 2800	2200 x 2800	2200 x 2800	2200 x 2800
2200 x 3000	2200 x 3000	2200 x 3000	2200 x 3000	2200 x 3000
2200 x 3200	2200 x 3200	2200 x 3200	2200 x 3200	2200 x 3200
2400 x 2400	2400 x 2400	2400 x 2400	2400 x 2400	2400 x 2400
2400 x 2600	2400 x 2600	2400 x 2600	2400 x 2600	2400 x 2600
2400 x 2800	2400 x 2800	2400 x 2800	2400 x 2800	2400 x 2800
2400 x 3000	2400 x 3000	2400 x 3000	2400 x 3000	2400 x 3000
2400 x 3200	2400 x 3200	2400 x 3200	2400 x 3200	2400 x 3200
2500 x 2500	2500 x 2500	2500 x 2500	2500 x 2500	2500 x 2500
2500 x 2800	2500 x 2800	2500 x 2800	2500 x 2800	2500 x 2800
2500 x 3000	2500 x 3000	2500 x 3000	2500 x 3000	2500 x 3000
2500 x 3200	2500 x 3200	2500 x 3200	2500 x 3200	2500 x 3200
3000 x 3000	3000 x 3000	3000 x 3000	3000 x 3000	3000 x 3000
3000 x 3200	3000 x 3200	3000 x 3200	3000 x 3200	3000 x 3200
3000 x 3500	3000 x 3500	3000 x 3500	3000 x 3500	3000 x 3500
3000 x 4000	3000 x 4000	3000 x 4000	3000 x 4000	3000 x 4000



Door installation on panel



Horizontal section of the PVC frame that covers the panel



Hole dimensions on panel for mounting of frame and door

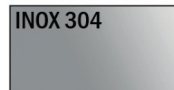
Other size are possible
Contact the technical office of Polidoor.

MOD 809TYP

Sliding Doors with rail passage



Standard
Plastified sheet



Optional
Stainless steel sheet



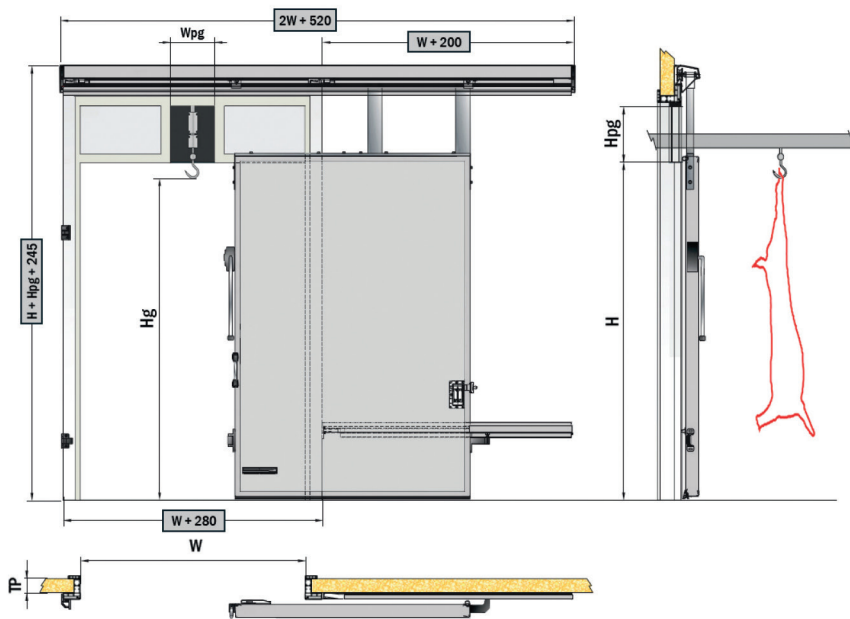
Large dimensions window



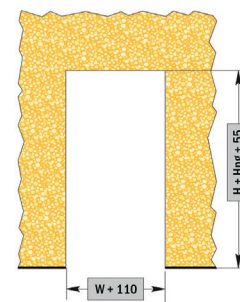
Safety key lock

The sliding driver is made of stainless steel like the system of movement, also stainless steel, so that the transfer of meat is not interrupted. The wicket is covered by two curved gaskets.

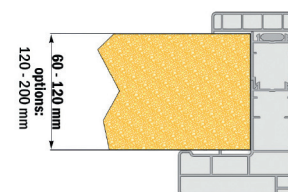
Standard Measurements



Door installation on panel



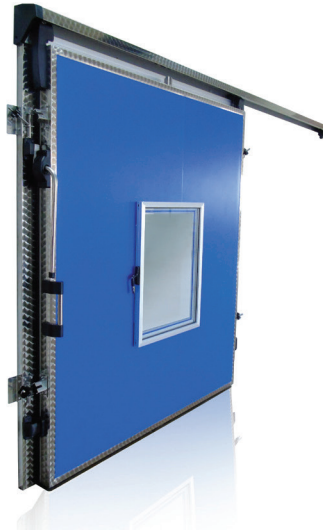
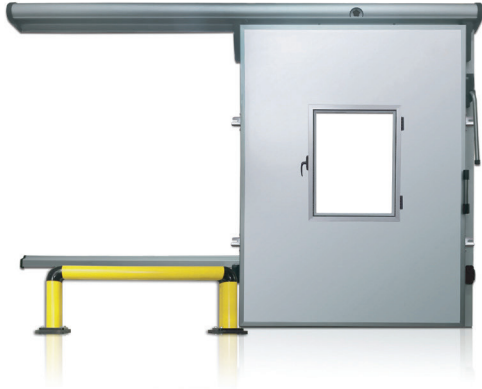
Hole dimensions on panel for mounting of frame and door



Horizontal section of the PVC frame that covers the panel

MOD 809AT-C

Sliding Doors for controlled atmosphere



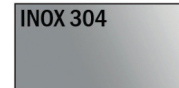
Standard

Plastified sheet



Optional

Stainless steel sheet



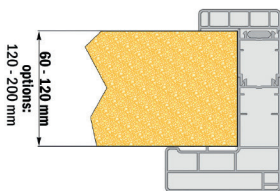
Key lock

Optional:

Protection bar against passing pallet trucks

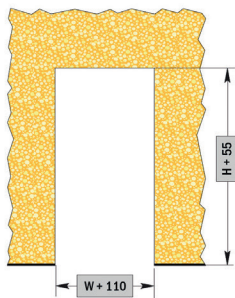
The sliding door for controlled atmosphere guarantees the hermetic sealing of the cold room, for maintaining temperature and humidity constant.

Standard Measurements

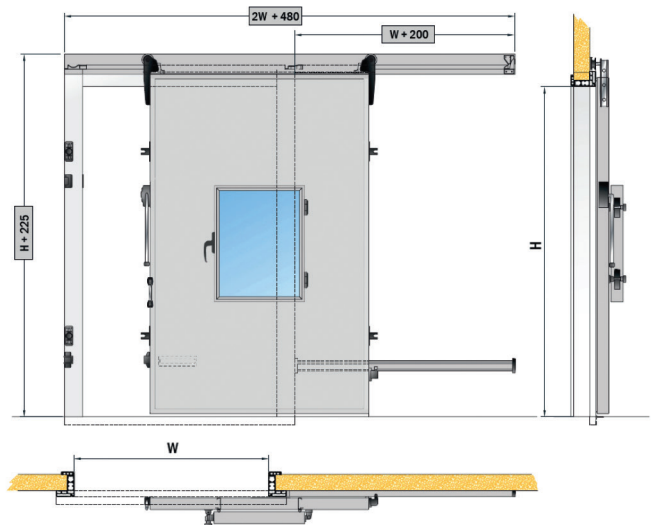


Metal reinforcements inside the frame to withstand great pressure

Horizontal section of the PVC frame that covers the panel that covers the panel

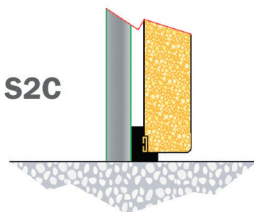


Hole dimensions on panel for mounting of frame and door



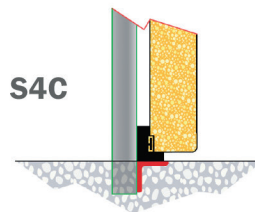
Door installation on panel

S2C



Positive temperature, without floor

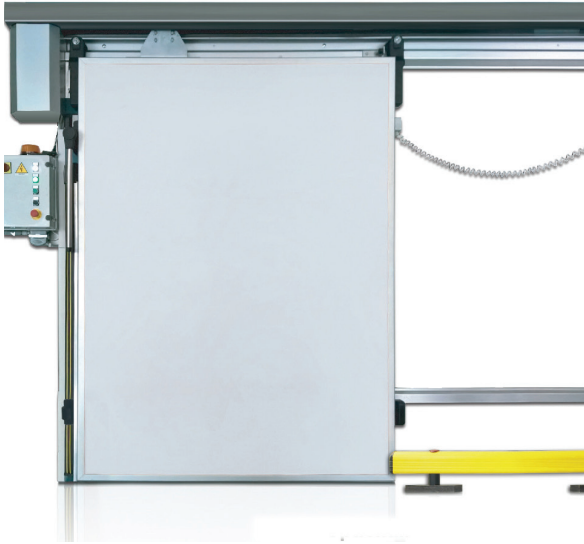
S4C



Positive temperature, with support angle

MOD 808TP-E, 809TP-E, 809TL-E, 812TXL-E, 812TXXL-E

Automatic Sliding Doors



Optimal

Protection bar against passing pallet trucks

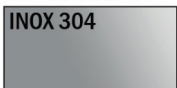
Standard

Plastified sheet



Optional

Stainless steel sheet

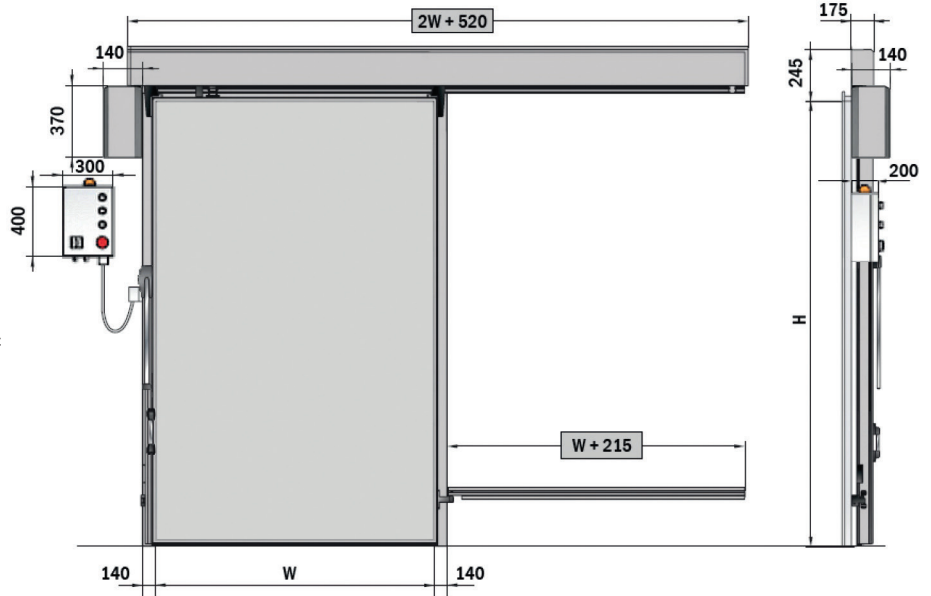


Large dimensions window

- A. Automatic activation of sliding door via a mechanism with a motor connected to a multifunction panel. Switchgear IP 56 is suitable for installation in a moist environment and includes an electronic circuit for controlling the functions and an inverter to control the paths during operation of the opening-closing and the necessary needs in electrical power in respect to the security settings.
- B. All automation system is pre-cabled therefore the connection of the board becomes easy through a multipolar connector which is located at the bottom of the board. There are already pre-installed factory settings which are easily changed depending on the needs of each user.
- C. Speed is set to 0,27 m/sec (as per regulations) and the engine has a reversible reducer. The speed can change easily from the board.
- D. The primary safety device for crash protection is a sensitive bar resistant type, located on the vertical edge of the door panel, which in case of impact with an obstacle, automatically stops the door and reverses motion.
- E. The controls of the STOP (end of movement) during the opening and closing is activated by a micro switch. The transmission is through a chain with adjustable power and not with tapes for cost reasons with breakage problems.
- F. A yellow light is flashing signals that the door is in motion. Besides the many arrangements for opening - closing the door from the board, two cords connected to switches are placed in front and behind the door (at desired distances) to facilitate the operator of the forklift at the entrance and exit of the cold room.
- G. In case of power failure the door is operated manually.



Two safety photocells which in case of obstacle detection during duration of closing, they revert the door motion to avoid collision.



Options



Remote control with one or more remote controls, push-button for opening-closing and security mushroom, arranged to anywhere in or out of the chamber. It is also provided opportunity for partial opening.



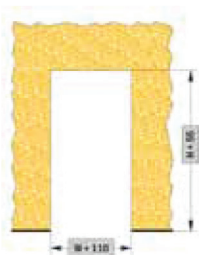
Motion detector (radar) for automatic opening of automatic door with identification of people or vehicles.



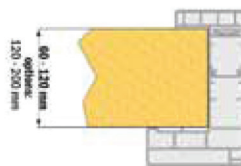
Security lock which activates the opening switches (remote control, opening cords, pushbutton) with opportunity of evacuation from inside, even if the door is locked.

Available

- A) Possibility of partial opening for the passage of pedestrians
- B) Mechanism of silent mode

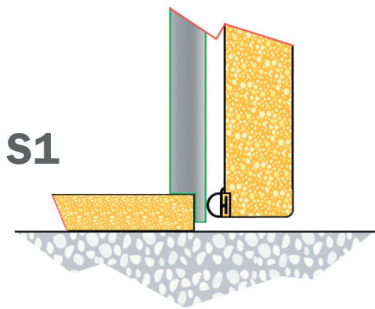


Hole dimensions on panel for mounting of frame and door

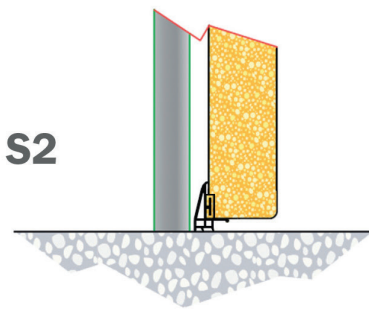


Horizontal section of the PVC frame that covers the panel

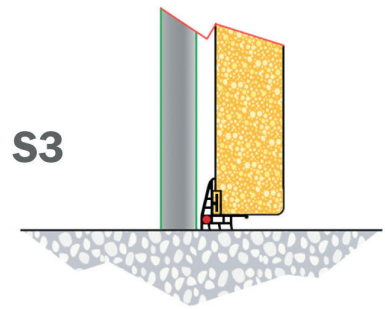
Thresholds



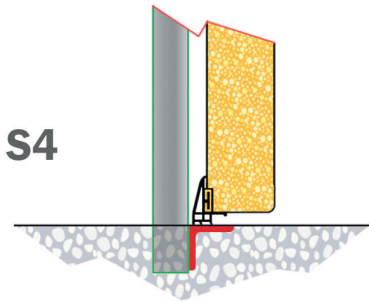
S1
With lower frame



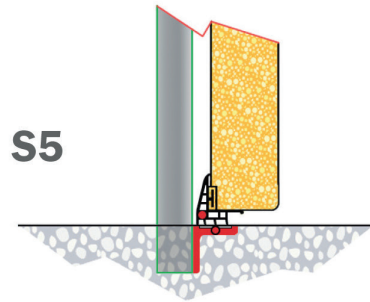
S2
Positive temperature, without floor



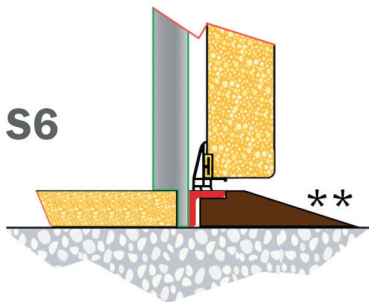
S3
Negative temperature, without floor



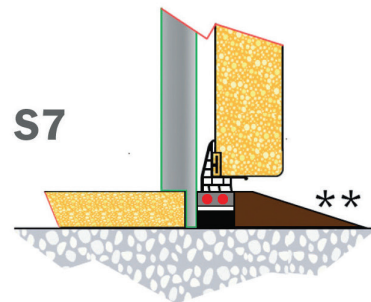
S4
Positive temperature with support angle



S5
Negative temperature with support angle



S6
Positive temperature with support angle and floor



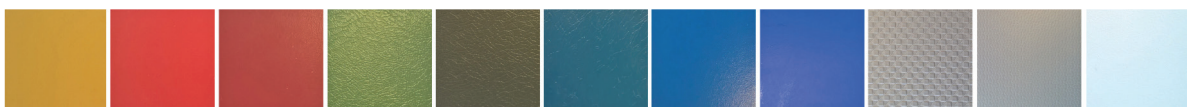
S7
Negative temperature with support angle and floor

**optional ramp



for TXXL doors (up to -40 °C), resistance is placed in an aluminum profile in the support angle

Colors



RAL 1006 RAL 3000 RAL 3003 RAL 6025 RAL 6007 RAL 5001 RAL 5010 RAL 5017 RAL 7000 RAL 7001 RAL 9010

Guarantee

Guarantee of immediate delivery of spare parts for 15 years.



Certifications

The Polidoor by kingspan products are certified with ISO 9001: 2008. The products are certified with CE in accordance with European Directive 89/106/ EC.



TR

Kingspan Yapi Elemanlari A.S.

Çırağan Cad. No: 97
Ortaköy 34347 Beşiktaş
İstanbul
Turkey
T: +90(212) 236 60 32 (pbx)
F: +90(212) 236 08 38
www.kingspanpanels.tc

AE

Kingspan Insulated Panels

Manufacturing LLC
P.O. Box 60493
Dubai Investment Park
U.A.E.
Dubai
T: +971 (0) 4 8854 232
F: +971 (0) 4 883 8515
www.kingspanpanels.ae

For the product offering in other markets
please contact your local sales representative
or visit www.kingspanpanels.com

Care has been taken to ensure that the contents of this publication are accurate, but Kingspan Limited and its subsidiary companies do not accept responsibility for errors or for information that is found to be misleading. Suggestions for, or description of, the ended use or application of products or methods of working are for information only and Kingspan Limited and its subsidiaries accept no liability in respect thereof.

08/2017

